

Camellia Japonica 椿 Seed Extract-CD25

Camellia Japonica

Camellia Japonica is plant which belongs to theaceae camellia, and was originally planted in Japan. It has been developed for ornamental plant, and now it has more than 2,000 varieties.

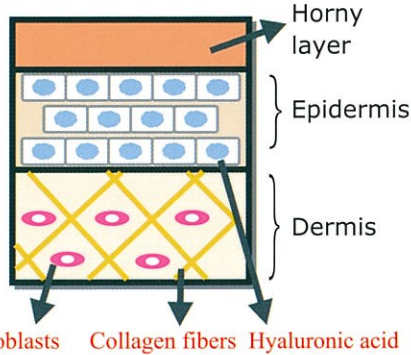
It is distributed in mainly hot western / southern part of Japan. It is bloomed in January to March. It has shiny leaf with deep green color.

It is famous in Izu Oshima Island (Oshima Tsubaki) and in Nagasaki Goto Island (Goto Tsubaki). Camellia Japonica oil is used for premium edible oil or hair conditioning oil as well as oil for lump in the old times.



Activation of Fibroblasts

The section of the skin



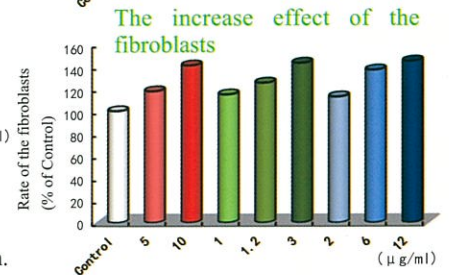
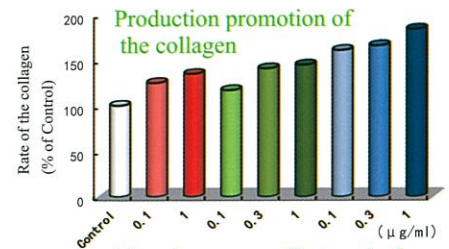
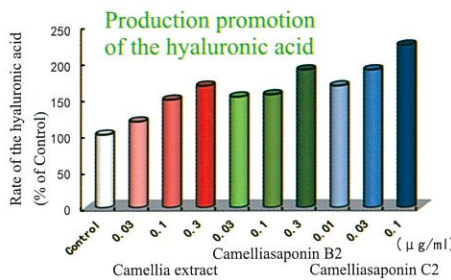
Fibroblasts Collagen fibers Hyaluronic acid

Fibroblasts: Cells which generates substances in dermis (collagen, elastin, hyaluronic acid and etc.)

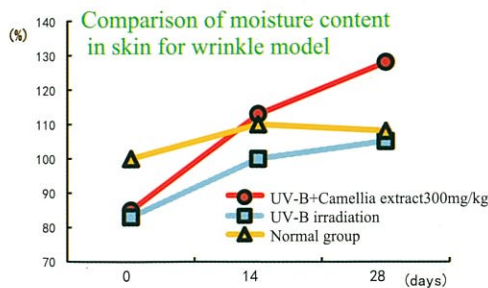
Collagen: 90% of dermis fibrous is made of collagen. It helps to keep elasticity of skin.

Hyaluronic acid: 1g of hyaluronic acid can contain about 6L of water. It helps to keep moisture of skin.

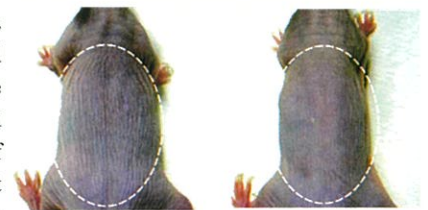
It was confirmed that fibroblasts was induced to increase, when Camellia Japonica Seed Extract was added to incubated solution of fibroblasts.



Improvement of wrinkles



Wrinkles of skin and roughness of skin was improved by taking camellia japonica seed extract. Regarding change of moisture content in skin, Camellia Japonica Seed Extract group shows improvement of moisture content earlier (almost half of what it takes) than groups which did not take camellia japonica seed extract.

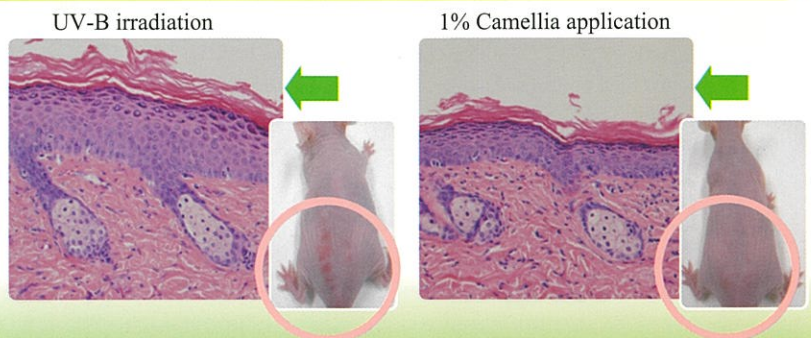


UV-B irradiation

Camellia extract 300mg/kg

Anti-inflammatory effect of Camellia Japonica Seed Extract

It was seen that red irritated part by UV irradiation had tendency to improve dose-dependently by topical application of Camellia Japonica Seed Extract. It was also shown that thickening of skin surface can be inhibited by topical application of Camellia Japonica Seed Extract. This anti-inflammatory effect was confirmed not only from appearance but also from mechanism of increasing cytokine which inhibit inflammatory substance.



TSUBAKI SEED

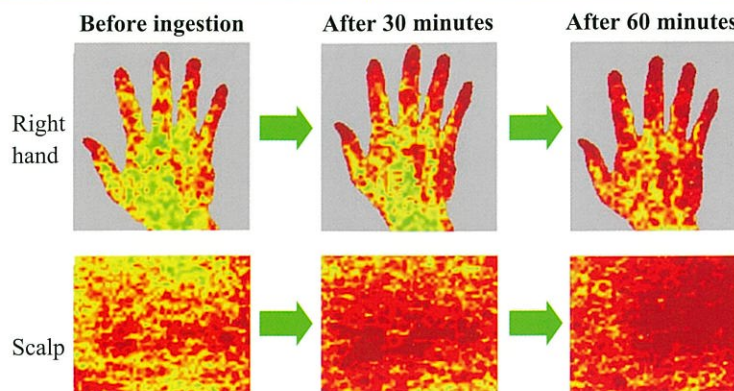
Improvement of blood flow

Laser Doppler velocimetry is used in hemodynamics research as a technique to partially quantify blood flow in human tissues such as skin.

Within the clinical environment, the technology is often referred to as laser Doppler flowmetry (LDF).



Camellia Japonica Seed Extract was given orally to six males with bald head in dose of 100mg twice daily. Bloodstream was measured by Laser Doppler Floemetry 30 and 60 minutes later. Among six people, five people's right hand blood flow and six people's scalp blood flow were increased by taking Camellia Japonica Seed Extract.



About CD25

Camelliasaponin is hard to dissolve in water, and there is bitterness.

We improved aqueous solubility by using cyclodextrin (CD) conjugation to make new Camellia Japonica Seed Extract-CD25, which is suitable for beverage and chewable tablet.

Product Information

Camellia Japonica Seed Extract-CD25

Test	Specification
Appearance	light brown to brown powder
Moisture	max. 7.0%
Saponin	min. 25%
Heavy metals	max. 20 ppm
Arsenic	max. 2 ppm
Microbiology Test Total plate count	max. 1,000 cfu/g
E.coli	negative
Daily dosage	100~300 mg/day
Product information	
Allergy labeling	Not necessary
GMO status	Unfractionated
Animal origin raw materials	Not necessary
Label indication	Camellia Japonica Seed Extract Cyclodextrin

#Packing

Minimum order:
Starting from 10kg

#Type of packing

According to the weight.
Aluminum bag
Eighteen litre drum
Fiber drum

#Storage

Please keep it in the place
where is cool and dry.

#Expiry date

2 years after production
(condition:unopened state)

#Quality control

Product inspection:Each Lot

※[Allergy labeling][Label indication]
according to Japanese regulation

Safety and recommended dosage

'Acute toxicity test', '28-days chronic oral dosed toxicity test', '90-days chronic oral dosed toxicity test', and 'Mutagenicity test' was conducted, and confirmed safety. Recommended daily dosage is 100 ~ 300 mg.



BHN Co., LTD

TEL:+81-3-5281-5661 FAX:+81-3-5281-5662

www.bhn.co.jp