

Type II Collagen Powder

CHICKEN CARTILAGE COLLAGEN

What is Type - II Collagen(Chicken Cartilage Collagen) ?

BHN Type II Collagen Powder It is material produced with the high standard, including Collagen Type II and Mucopolysaccharide as structural components of Cartilage. We recommend this product is useful effect on human joint food supplement. Human body include the chondroitin sulfate type A but chondroitin sulfate type A is decreased human body by aging. Type II collagen is suitable for use and better absorption to body.



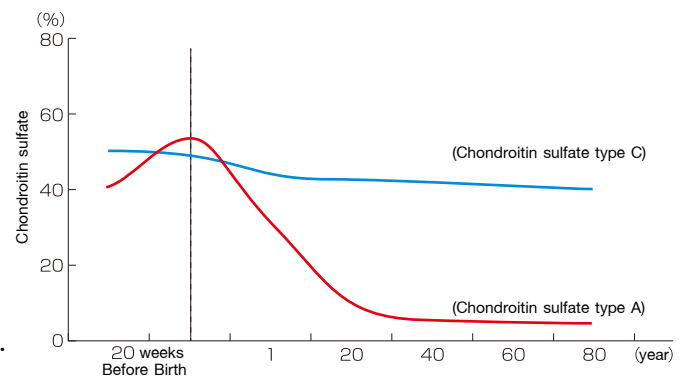
Raw material of Chicken Cartilage

Importance of Chondroitin Sulfate Type A

Chondroitin Sulfate can be categorized as Sulfate A, B, C, D, E, H, and K (7 types) by binding position and quantity. Among these groups, human has 2 types, especially Type A (Sulfate 4) and Type C (Sulfate 6), and mainly Type A is decreased by age. (Right graph as reference).

Today, Chondroitin made of sharks in the market contains only Type C and Type D. Chondroitin Sulfate made of chicken contains Type A. So, we recommend this material to you to supply Type A, which human loses in older age.

Decreasing Chondroitin Type A in older age



Mathews.M.B.The Molecular Evolution of Cartilage.Clin.Orthop. Relat.Res.(48)267-283, 1966

Chondroitin sulfate

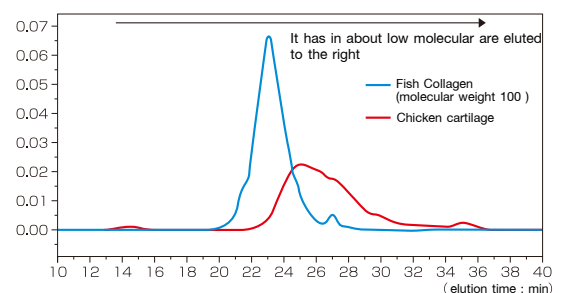
	Area		Type-A(4S)/Type-C(6S)
	Type-A:4S	Type-C:6S	
Chicken Cartilage powder	356944	99512	3.59
Shark cartilage powder	159546	352979	0.45



Highly Absorbable Low Molecular Weight Type II Collagen

The molecular weight distribution of type II collagen that contained in chicken breast cartilage and fish collagen extract powder that was measured in separate graphic shown that the average molecular weight is 1,000. which is considered as a low molecular weight in the market.

As the result shown in graphic, type II collagen (red line) was eluted to the right side together with fish collagen (blue line) with an average molecular weight is 1,000.



Therefore, the average molecular weight of the collagen derived from chicken breast cartilage extract powder is less than 1,000 and it is considered as highly absorbable.

