

TECHNICAL DATA SHEET

Page 1/2

Alipure® (solvent-free alpha-Lipoic Acid)

CHARACTERISTICS: Alipure® is a fine, yellow powder derived from chemical synthesis, nearly insoluble in water. Moderate caking is product-specific and not a sign of declining product quality. This Dietary Supplement is used as a powerful anti-oxidant.

COMPOSITION: Alipure® is free of organic solvents¹⁾, produced under a patent pending manufacturing process. The product is combined with 2 % of a free flowing agent (SiO₂).

Formula	C ₈ H ₁₄ S ₂ O ₂
CAS-No.	1077-28-7
Molecular weight	206.3 g/mol

Status	
EINECS (EU)	214-071-2
MITI (Japan)	9-817
TSCA (USA)	Exempt: Regulated as Dietary Supplement

¹⁾ The product is considered solvent free with each organic solvent below the limit of detection (1 mg/kg).

SPECIFICATION:	Alpha-Lipoic Acid ²⁾	97.0 – 102.0 %
	Epi-Lipoic Acid	max. 0.1 %
	Polymers	max. 2.0 %
	Water	max. 0.5 %

²⁾ calculated on silicon free basis

REGULAR CONTROL:	<u>Organic solvents</u>	< 1 mg/kg
	<u>Heavy metals</u>	
	Mercury	max. 0.10 mg/kg
	Cadmium	max. 1.0 mg/kg
	Lead	max. 1.0 mg/kg
	Arsenic	max. 1.0 mg/kg

Office Germany: AlzChem Trostberg GmbH, Dr.-Albert-Frank-Straße 32, 83308 Trostberg, Germany
Phone +49 8621/86-0, Fax +49 8621/86-2911

Office USA: AlzChem LLC, 680 Village Trace, Bldg 20, Marietta, Georgia 30067, USA
Phone +1 770-804-0371, Fax +1 770-804-0375

This information and all technical and other advice are based on AlzChem's present knowledge and experience. However, AlzChem assumes no liability for such information or advice, including the extent to which such information or advice may relate to third party intellectual property rights. AlzChem reserves the right to make any changes to information or advice at any time, without prior or subsequent notice. ALZCHEM DISCLAIMS ALL REPRESENTATIONS AND WARRANTIES, WHETHER EXPRESS OR IMPLIED, AND SHALL HAVE NO LIABILITY FOR, MERCHANTABILITY OF THE PRODUCT OR ITS FITNESS FOR A PARTICULAR PURPOSE (EVEN IF ALZCHEM IS AWARE OF SUCH PURPOSE), OR OTHERWISE. ALZCHEM SHALL NOT BE RESPONSIBLE FOR CONSEQUENTIAL, INDIRECT OR INCIDENTAL DAMAGES (INCLUDING LOSS OF PROFITS) OF ANY KIND. It is the customer's sole responsibility to arrange for inspection and testing of all products by qualified experts. Reference to trade names used by other companies is neither a recommendation nor an endorsement of the corresponding product, and does not imply that similar products could not be used.

Edition: April 2018 (Provided that a new edition is published this data sheet loses its validity)

TECHNICAL DATA SHEET

Page 2/2

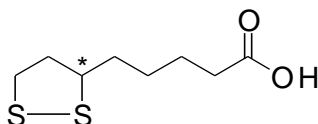
Microbiological data

Total aerobic microbial counts	max.	1000 cfu / g
Total combined yeast and mould counts	max.	50 cfu / g
Coliform bacteria	negative	/ g
E. coli	negative	/ g
Staphylococcus aureus	negative	/ g
Salmonella sp.	negative	/ 25 g

PROPERTIES: (physico-chemical)

Consistency: powder
Bulk density: typically 350 ± 50 g/l

CHEMICAL STRUCTURE:



STORAGE CONDITIONS:

Alipure® should be stored at room temperature under dry conditions and protected from light.

SHELF LIFE:

Shelf life is 36 months from date of manufacture if stored under suggested conditions. Material is sensitive to light.

PACKAGING:

Plastic drums with inner PE bag containing 5 kg net.

Office Germany: AlzChem Trostberg GmbH, Dr.-Albert-Frank-Straße 32, 83308 Trostberg, Germany
Phone +49 8621/86-0, Fax +49 8621/86-2911

Office USA: AlzChem LLC, 680 Village Trace, Bldg 20, Marietta, Georgia 30067, USA
Phone +1 770-804-0371, Fax +1 770-804-0375

This information and all technical and other advice are based on AlzChem's present knowledge and experience. However, AlzChem assumes no liability for such information or advice, including the extent to which such information or advice may relate to third party intellectual property rights. AlzChem reserves the right to make any changes to information or advice at any time, without prior or subsequent notice. ALZCHEM DISCLAIMS ALL REPRESENTATIONS AND WARRANTIES, WHETHER EXPRESS OR IMPLIED, AND SHALL HAVE NO LIABILITY FOR, MERCHANTABILITY OF THE PRODUCT OR ITS FITNESS FOR A PARTICULAR PURPOSE (EVEN IF ALZCHEM IS AWARE OF SUCH PURPOSE), OR OTHERWISE. ALZCHEM SHALL NOT BE RESPONSIBLE FOR CONSEQUENTIAL, INDIRECT OR INCIDENTAL DAMAGES (INCLUDING LOSS OF PROFITS) OF ANY KIND. It is the customer's sole responsibility to arrange for inspection and testing of all products by qualified experts. Reference to trade names used by other companies is neither a recommendation nor an endorsement of the corresponding product, and does not imply that similar products could not be used.

Edition: April 2018 (Provided that a new edition is published this data sheet loses its validity)